



HOLY FAITH PRESENTATION SCHOOL

RAWALPORA SRINAGAR KASHMIR

Contact No.: 0194-3565276

Winter Assignment

(Class – 6th)

Subject: Science

FA-1

Chapter: Components of food

Exercise Questions

1. Name the major nutrients in our food.

Solution: The major nutrients in our food are Carbohydrates, Proteins, Lipids, Vitamins, Minerals and dietary fibres.

2. Why should we include vitamins in our diet?

Solution: We must include vitamins in our diet as these help in boosting the immune system of the body and helps us to fight against infections and thus prevent us from various diseases.

3. What is the aim of Mid Day Meal program?

Solution: The aim of mid day meal program is:

- To improve nutritional status of school going children.
- To overcome deficiency diseases.
- To maintain proper growth and development.
- To promote feeling of brotherhood among children.

4. Name the following:

(a) The nutrients which mainly give energy to our body.

(b) The nutrients that are needed for the growth and maintenance of our body.

(c) A vitamin required for maintaining good eyesight.

(d) A mineral that is required for keeping our bones healthy.

- Solution:**
- a) Carbohydrates
 - b) Proteins and minerals
 - c) Vitamin A
 - d) Calcium

5. Name two foods, each rich in:

- a) Fats
- b) Starch
- c) Dietary fibre
- d) Protein

- Solution:**
- a) Ghee, butter
 - b) Rice, wheat
 - c) Whole grains, raw vegetables
 - d) Milk, soya bean

6. Tick (✓) the statements that are correct.

- (a) By eating rice alone, we can fulfil the nutritional requirements of our body. ()
- (b) Deficiency diseases can be prevented by eating a balanced diet. (✓)
- (c) Balanced diet for the body should contain a variety of food items. (✓)



HOLY FAITH PRESENTATION SCHOOL

RAWALPORA SRINAGAR KASHMIR

Contact No.: 0194-3565276

Winter Assignment

(Class – 6th)

(d) Meat alone is sufficient to provide all nutrients to the body. ()

7. Fill in the blanks.

- (a) Rickets is caused by the deficiency of Vitamin D.
- (b) Deficiency of Vitamin B1 causes a disease known as beriberi.
- (c) Deficiency of Vitamin C causes a disease known as Scurvy.
- (d) Night blindness is caused due to deficiency of Vitamin A in our food.

Chapter: Sorting Materials into Groups

Exercise Questions

1. Name five objects which can be made from wood.

Solution:

- a) Cupboard
- b) Table
- c) Doors
- d) Desk
- e) Chair

2. Select those objects which shine from the following:

Glass bowl, plastic toy, steel spoon, cotton shirt

Solution: Glass bowl and steel spoon are the objects which shine.

3. Match the objects given below with the materials from which they could be made. Remember, an object could be made from more than one material, and a given material could be used for making many objects.

Solution:

Objects	Material
Book	Paper, wood
Tumbler	Glass, wood, plastic
Chair	wood, plastic
Toy	Glass, wood, paper, plastics, leather
Shoes	Leather, plastic

4. State whether the statements given below are True or False.

- (i) Stone is transparent, while glass is opaque. False
- (ii) A notebook has lustre while an eraser does not. False
- (iii) Chalk dissolves in water. False
- (iv) A piece of wood floats on water. True
- (v) Sugar does not dissolve in water. False
- (vi) Oil mixes with water. False
- (vii) Sand settles down in the water. True



HOLY FAITH PRESENTATION SCHOOL

RAWALPORA SRINAGAR KASHMIR

Contact No.: 0194-3565276

Winter Assignment

(Class – 6th)

(viii) Vinegar dissolves in water.

True

5. Given below are the names of some objects and materials:

Water, basketball, orange, sugar, globe, apple and earthen pitcher. Group them as:

(a) Round shaped and other shapes (b) Eatables and non-eatables

Solution: (a) Round shaped – Basketball, Orange, Globe, Apple, Earthen Pitcher

Other shapes – Water, Sugar

(b) Eatables – Water, Orange, Sugar, Apple

Non-eatables – Basketball, Globe, Earthen Pitcher

6. List all items known to you that float on water. Check and see if they will float on an oil or kerosene.

Solution: A few items that float on water are as follows:

Leaves

Plastic bottle

Paper piece

Thermocol's piece

Wood

Plastic ball

Cork

However, these items will not float on oil or kerosene.

7. Find the odd one out from the following:

a) Chair, Bed, Table, Baby, Cupboard

b) Rose, Jasmine, Boat, Marigold, Lotus

c) Aluminum, Iron, Copper, Silver, Sand

d) Sugar, Salt, Sand, Copper Sulphate

Solution:

a) Baby (others are made up of wood)

b) Boat (others are flowers)

c) Sand (others are metals)

d) Sand (others are soluble in water)



HOLY FAITH PRESENTATION SCHOOL

RAWALPORA SRINAGAR KASHMIR

Contact No.: 0194-3565276

Winter Assignment

(Class – 6th)

Subject: Science

FA-2

Chapter: Separation of Substances

Exercise Questions

1. Why do we need to separate different components of a mixture? Give two examples.

Solution: When two or more substances are mixed together, they form a mixture. Components of a mixture should be separated because some components may not be useful or may spoil the useful component of the mixture.

Examples:

Tea leaves are separated from the liquid with a strainer while preparing tea.

Removal of stone pieces from wheat, rice or pulses by hand.

2. What is winnowing? Where is it used?

Solution: The method of separating the components from a mixture is known as winnowing. In this method, heavier and lighter components of a mixture are separated by wind or by blowing air. This method is used by farmers to separate lighter husk particles from heavier seeds of grain.

3. How will you separate husk or dirt particles from a given sample of pulses before cooking?

Solution: Husk and dirt particles are separated from pulses by winnowing.

4. What is sieving? Where is it used?

Solution: Sieving is a method in which fine particles are sieved through holes in the sieve while the bigger impurities remain on the sieve. Sieving is used in a flour mill to separate impurities like husk and stones from wheat before grinding it. It is also used at construction sites to separate pebbles and stones from sand.

5. How will you separate sand and water from their mixture?

Solution: Sand and water are separated from their mixture by the following steps:

- The mixture is allowed to stand without any disturbances.
- Now, sand settles down.
- Slowly pour the water into another container to obtain sand in the bottom.

6. Is it possible to separate sugar mixed with wheat flour? If yes, how will you do it?

Solution: Yes, it is possible to separate sugar mixed with wheat flour by the following method:

- Mix sugar and wheat flour in water.
- Stir the solution to allow the sugar to dissolve.
- Now, filter the mixture.
- Filtrate contains the sugar solution, and the residue will be wheat flour.



HOLY FAITH PRESENTATION SCHOOL

RAWALPORA SRINAGAR KASHMIR

Contact No.: 0194-3565276

Winter Assignment

(Class – 6th)

7. How would you obtain clear water from a sample of muddy water?

Solution: The following process should be carried out to obtain clear water from muddy water:

- i) Allow muddy water to stand.
- ii) Mud gets settled down in the water.
- ii) Slowly pour water into another container.

8. Fill in the blanks.

- (a) The method of separating the seeds of paddy from its stalks is called threshing.
- (b) When milk cooled after boiling is poured onto a piece of cloth, the cream (malai) is left behind on it. This process of separating cream from milk is an example of filtration.
- (c) Salt is obtained from seawater by the process of evaporation.
- (d) Impurities settled at the bottom when muddy water was kept overnight in a bucket. The clear water was then poured off from the top. The process of separation used in this example is called decantation.

9. True or false.

- (a) A mixture of milk and water can be separated by filtration.
- (b) A mixture of powdered salt and sugar can be separated by the process of winnowing.
- (c) Separation of sugar from tea can be done with filtration.
- (d) Grain and husk can be separated with the process of decantation.

Solution: a) False b) False c) False d) False

10. Lemonade is prepared by mixing lemon juice and sugar in water. You wish to add ice to cool it. Should you add ice to the lemonade before or after dissolving sugar? In which case would it be possible to dissolve more sugar?

Solution: Ice should be added to lemonade after dissolving sugar. It is possible to add more sugar before adding ice.

11. Mustard oil gets accidentally mixed with water? How will you remove mustard oil from the water?

Solution. The best technique to separate mixture of oil and water is using the separating funnel, because oil, being lighter will stay on top of the water, making two separate layers of oil and water, and then we can separate them easily.

12. A tiny iron drill of a carpenter falls into a heap of straw. Suggest a convenient way of recovering the drill?

Solution. A tiny iron drill can be separated from a heap of straw by using a magnet as the metal will attract the magnet.

13. Differentiate between a saturated solution and unsaturated solution?

Solution. A saturated solution is a solution in which no more solute can be added to a solvent at a given temperature whereas an unsaturated solution is a solution in which more solute can be added to solvent at a given temperature.



HOLY FAITH PRESENTATION SCHOOL

RAWALPORA SRINAGAR KASHMIR

Contact No.: 0194-3565276

Winter Assignment

(Class – 6th)

Chapter: Getting To Know Plants

Chapter: 7 Exercise Questions

1. Correct the following statements and rewrite them in your notebook.

- (a) Stem absorbs water and minerals from the soil.
- (b) Leaves hold the plant upright.
- (c) Roots conduct water to the leaves.
- (d) The number of petals and stamens in a flower is always equal.
- (e) If the sepals of a flower are joined together, its petals are also joined together.
- (f) If the petals of a flower are joined together, then the pistil is joined to the petal.

Solution: a) Roots absorb water and minerals from the soil.

b) Stem holds the plant upright.

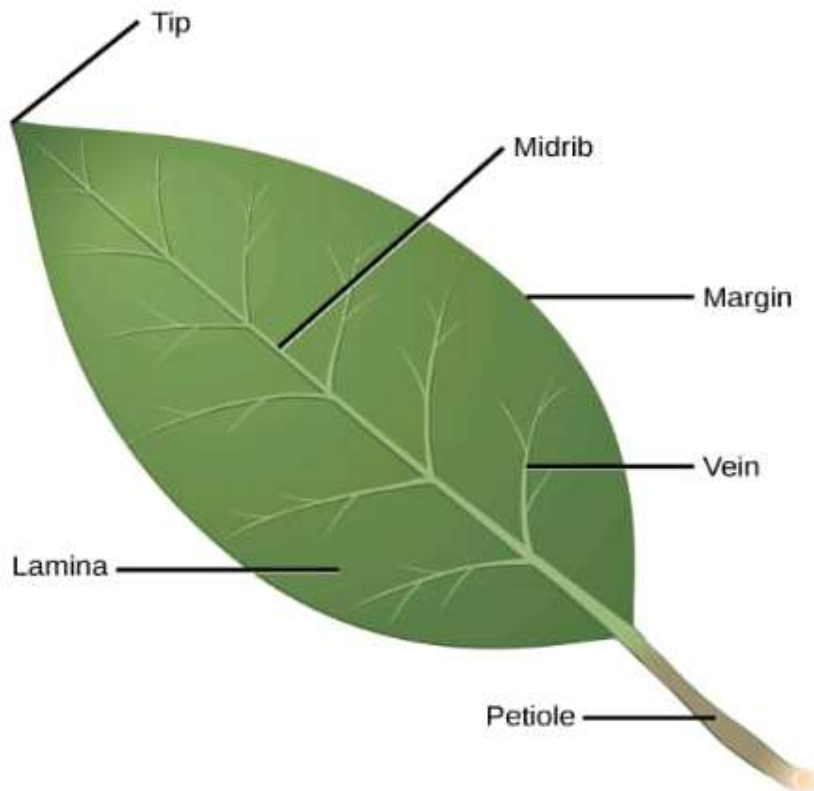
c) Stems conduct water to the leaves.

d) The number of petals and stamens in a flower may not always be equal.

e) If the sepals of a flower are joined together, its petals are separate.

f) If the petals of a flower are joined together, then the pistil may or may not be joined to the petal.

2. Draw (a) a leaf, (b) a taproot and (c) a flower you have studied for Table 7.3





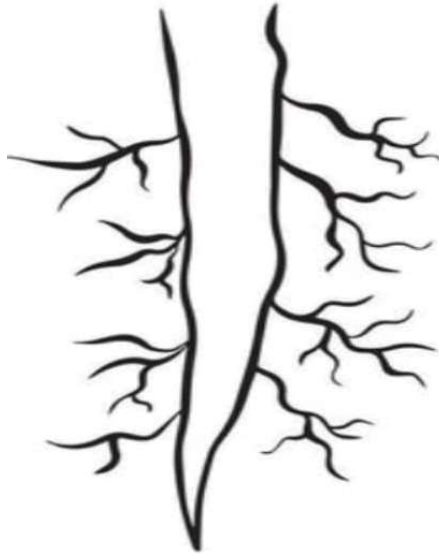
HOLY FAITH PRESENTATION SCHOOL

RAWALPORA SRINAGAR KASHMIR

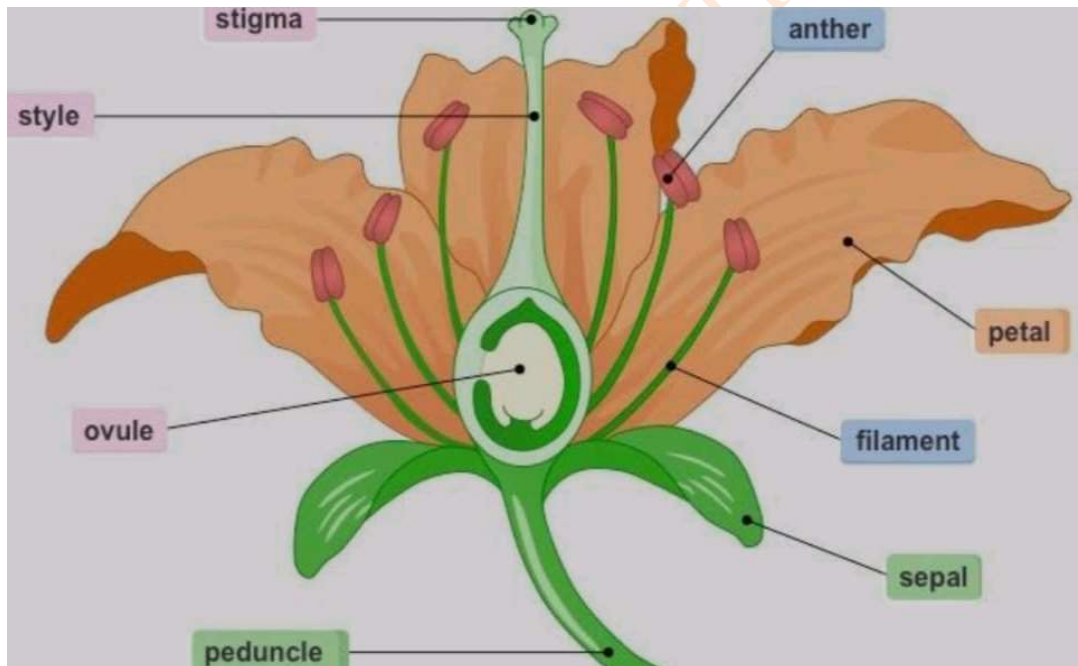
Contact No.: 0194-3565276

Winter Assignment

(Class – 6th)



Tap Root



3. Can you find a plant in your house or in your neighbourhood which has a long but weak stem? Write its name. In which category will you place it?

Solution: Yes, cucumber plant needs support. It is a climber.

4. What is the function of a stem?

Solution: Following are the functions of a stem

Stems hold the plant upright.

Stem conducts water from roots to other parts all the plant.

Stems conduct food from leaves to other parts of the plant.



HOLY FAITH PRESENTATION SCHOOL

RAWALPORA SRINAGAR KASHMIR

Contact No.: 0194-3565276

Winter Assignment

(Class – 6th)

5. Which of the following leaves have reticulate venation?

Wheat, tulsi, maize, grass, coriander (dhania), China rose

Solution: Tulsi, China rose, and coriander have reticulate venation.

6. If a plant has fibrous roots, what type of venation do its leaves have?

Solution: If a plant has a fibrous root, its leaves have parallel venation.

7. If a plant has leaves with reticulate venation, what kind of roots will it have?

Solution: If a plant has leaves with reticulate venation, it will have a tap root.

8. Is it possible for you to find out whether a plant has taproot or fibrous roots by looking at the impression of its leaf on a sheet of paper?

Solution: Yes, it is possible to find whether a plant has taproot or fibrous roots by looking at the impression of its leaf on a sheet of paper.

9. What are the parts of a flower?

Solution: a) Sepals b) Petals c) Stamens d) Pistil

10. From the following plants, which of them have flowers?

Grass, maize, wheat, chilli, tomato, tulsi, peepal, shisham, banyan, mango, jamun, guava, pomegranate, papaya, banana, lemon, sugarcane, potato, groundnut

Solution: The plants which have flowers are grass, maize, wheat, chilli, tomato, tulsi, peepal, shisham, banyan (flowers lie inside its fruits), mango, jamun, guava, Pomegranate, papaya, banana, lemon, sugarcane, potato, groundnut.

11. Name the part of a plant which produces food. Name the process.

Solution: Leaves produce food through a process called Photosynthesis.

12. In which part of a flower will you find the ovary?

Solution: The ovary is found in the lowermost and most swollen part of the pistil.

13. Name two plants in which one has joined sepals, and the other has separate sepals.

Solution: Plants with joined sepals – Datura and cotton

Plants with separate sepals – Rose and Lotus